

OUR APPROACH

ISELI has been founded by experts who share the same values for renewable, for sustainability and for excellence. Thanks to a team cumulating more than 50 years' experience in the PV modules manufacturing sector, ISELI designs and manufactures its TOP class products with the objectives to always provide the best Quality to its customers.

At ISELI, we exceed and re-invent the standards of the industry with one objective: Customer satisfaction.



ENERSOL MONO SERIES

260 -300 WP

+ 0/+5 POSITIVE TOLERANCE

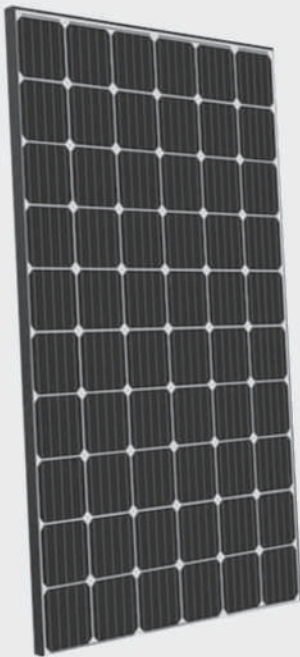
↔ ROOFTOP AND OFF-GRID DESIGN

✓ HIGH QUALITY

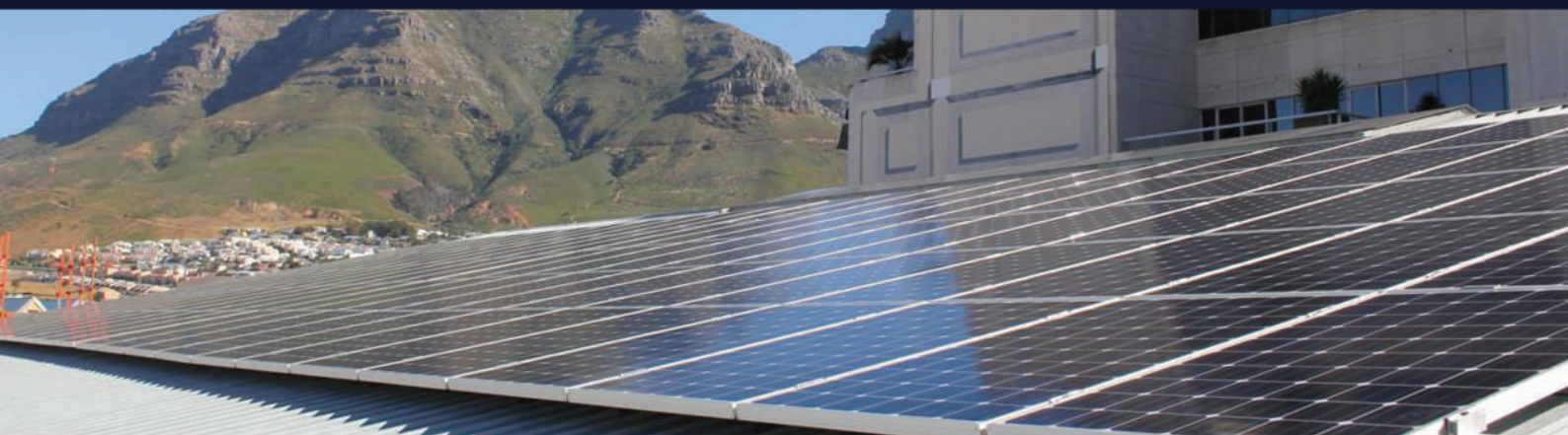
25 year linear performance
12 year product warranty



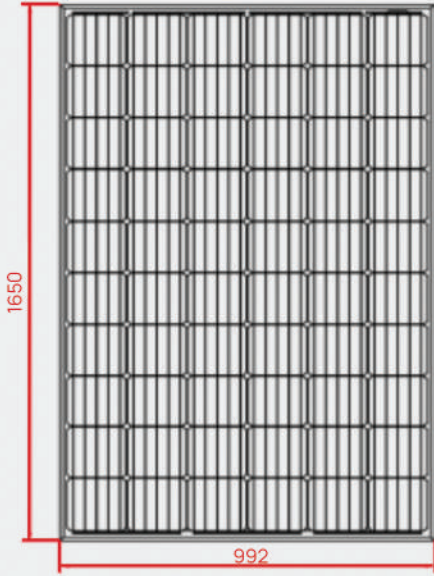
IEC 61215
IEC 61730



Thanks to the use of High Quality solar cells, our panels achieve outstanding performance and ensure maximum production output even under poor lighting conditions. The strong yet ultra light frames makes easy installation but robust for residential and commercial

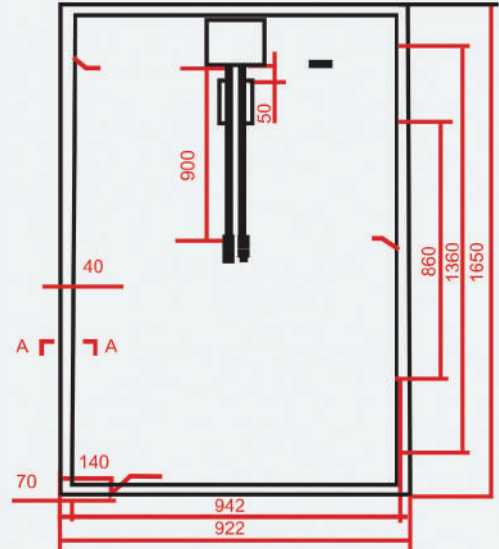


MONO SERIES 260 - 300 WP



GENERAL CHARACTERISTICS

| | |
|----------------------------|--|
| Cell | Monocrystalline solar cell 156 x 156 mm |
| No. of Cells (connections) | 60 (6x10) |
| Panel Dimensions | 1650 x 992 x 35-40 mm |
| Weight | 19 kg |
| Connectors and cable | Connectors & 0.9 - 1.1m cables |



THERMAL CONDITIONS

| | |
|---|------------|
| Normal Operating Cell Temperature 800W/m ² Irradiance, 20°C, AM = 1.5 | 48C ±2°C |
| Power Temperature Coefficient | -0.5%/K |
| Current Temperature Coefficient | 0.035%/K |
| Voltage Temperature Coefficient | -0.37 MV/K |

ELECTRIC PERFORMANCE at STC*

| | 260 Wp | 265 Wp | 270 Wp | 275 Wp | 280 Wp | 285 Wp | 290 Wp | 295 Wp | 300 Wp |
|-----------------------|---------|---------|---------|---------|---------|---------|---------|---------|---------|
| Maximum Power | | | | | | | | | |
| Maximum Power Voltage | 30.75 V | 31.07 V | 31.48 V | 31.72 V | 32.08 V | 32.43 V | 32.70 V | 32.97 V | 33.30 V |
| Maximum Power Current | 8.46 A | 8.53 A | 8.58 A | 8.67 A | 8.73 A | 8.79 A | 8.87 A | 8.95 A | 9.01 A |
| Open Circuit Voltage | 37.66 V | 37.87 V | 38.08 V | 38.29 V | 38.49 V | 38.79 V | 38.91 V | 39.12 V | 39.33 V |
| Short Circuit Current | 9.21 A | 9.25 A | 9.37 A | 9.40 A | 9.46 A | 9.48 A | 9.50 A | 9.59 A | 9.64 A |

LIMITS

| | |
|------------------------|---------------|
| Operating Temperature | -40°C to 85°C |
| Maximum System Voltage | 1000V DC |

*Standard Test Conditions: 1000W/m² irradiance, 25°C and AM = 1.5

HIGH PERFORMANCE

25 25 YEARS linear performance

12 12 years Product warranty

